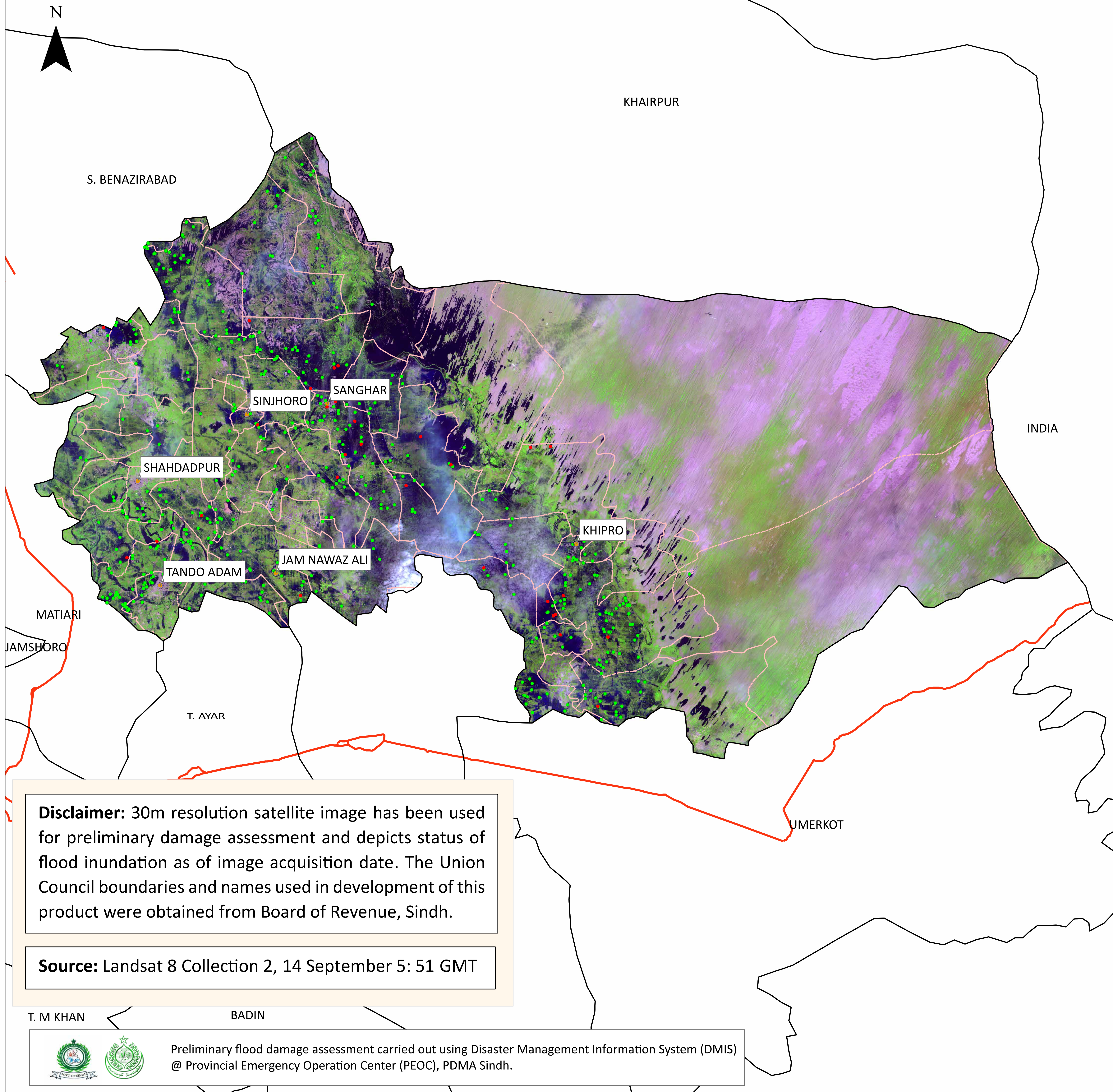


Flood Inundation in Sanghar District



Disclaimer: 30m resolution satellite image has been used for preliminary damage assessment and depicts status of flood inundation as of image acquisition date. The Union Council boundaries and names used in development of this product were obtained from Board of Revenue, Sindh.

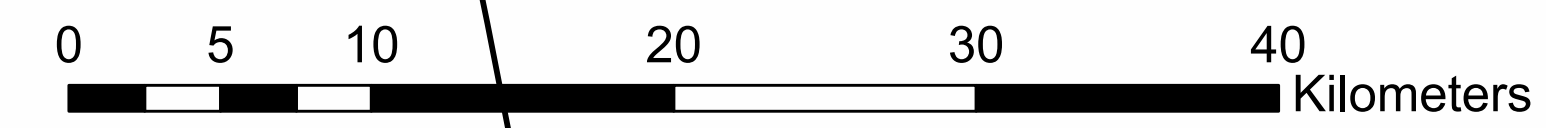
Source: Landsat 8 Collection 2, 14 September 5: 51 GMT

T. M KHAN BADIN

Preliminary flood damage assessment carried out using Disaster Management Information System (DMIS) @ Provincial Emergency Operation Center (PEOC), PDMA Sindh.

District Profile			
	21/08/2022	14/09/2022	Change
District Area	10,259.02 Sq.Km		
Area Inundated	390 Sq.Km	780.13 Sq.Km	+390.13
	3.80%	7.60%	
Crop Land	1,058,527.05 Acres		
Crop Land Inundated	85,345.04 Acres	97,391.6 Acres	+12,046.56
	8.06%	9.20%	
Rainfall (Jul-Aug)	582 mm		
Population (as per 2017 Census)	2,123,792		
Affected Union Councils	43 Out of 44	43 out of 44	

UC-wise Affected Villages						
Name	Submerged in Water			Surrounded by Water		
	21/08/2022	14/09/2022	Change	21/08/2022	14/09/2022	Change
ASGHARABAD	1	-	-1	17	4	-13
BARHOON	-	-	0	19	3	-16
BERANI	1	-	-1	16	14	-2
CHOTIARYOON	-	-	0	3	4	+1
DHIL YAR	1	2	+1	51	61	+10
GUJRI	-	-	0	13	11	-2
GUL MOHAMMAD LAGHARI	-	-	0	9	8	-1
HATHUNGO	-	3	+3	2	5	+3
HOT WASSAN	-	-	0	14	8	-6
JAFFAR KHAN LEGHARI	-	-	0	32	9	-23
JAM NAWAZ ALI	-	2	+2	30	18	-12
JATIA	1	-	-1	13	8	-5
JHOL	-	-	0	13	10	-3
JINHAR	1	2	+1	14	8	-6
KAMAL HINGORO	-	-	0	-	1	+1
KANDIARI	1	1	0	22	23	+1
KANHAR	-	2	+2	20	7	-13
KEHORE	2	5	+3	26	42	+16
KHADRO	-	-	0	10	11	+1
KHADWARI	-	5	+5	13	24	+11
KHORI	1	-	-1	24	8	-16
KHUMB DARHOON	1	1	0	24	8	-16
LUNDO	1	-	-1	-	-	0
KURKALI	-	-	0	17	11	-6
MALDASI	-	-	0	5	5	0
MANIK THAHIM	-	1	+1	29	18	-11
MIAN	-	-	0	11	18	+7
MIR HASSAN MARI	-	-	0	16	22	+6
MITHO KHOSO	-	-	0	26	28	+2
NAUABAD	-	2	+2	23	15	-8
PERU FAQIR SHORO	-	2	+2	16	18	+2
PHULLAHDAYUN	-	1	+1	5	6	+1
PRITAMABAD	-	-	0	36	41	+5
RUNJHO	1	1	0	35	18	-17
SARHARI	-	1	+1	17	4	-13
SAYYED SIBGHATULLAH SHAHEED	-	1	+1	20	18	-2
SHAH MARDAN ABAD	-	2	+2	12	9	-3
SHAH SIKANDARABAD	-	-	0	10	20	+10
SHAHPUR CHAKAR	-	-	0	5	7	+2
SINJHORO	-	-	0	4	4	0
SITHARPIR	-	1	+1	25	7	-18
SOOMAR FAQIR HINGORO	-	-	0	7	-	-7
Total	12	35	+23	704	564	-140



- Cities/Towns
- Union Councils
- Villages (As per 14-09-2022)
- Submerged under Water
- Highways
- Surrounded by Water